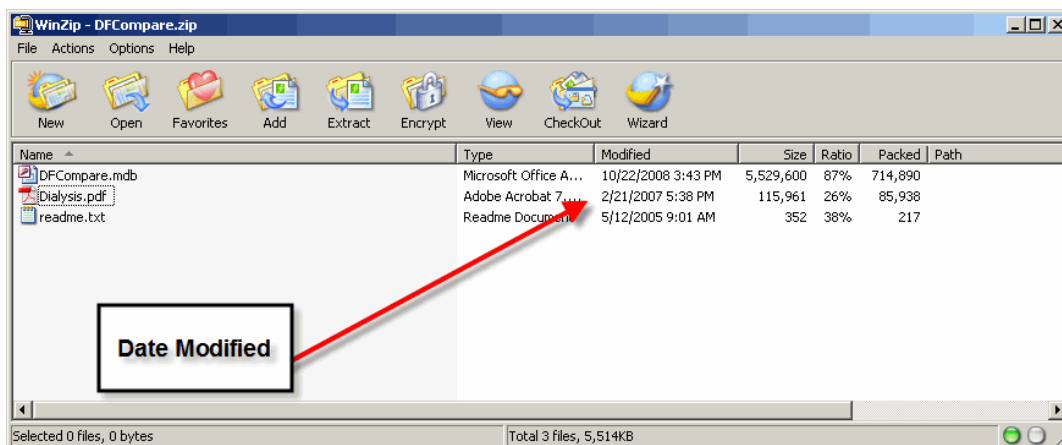


This functionality is primarily used by health policy researchers and the media. The data provided in the four tables comes from the data that is displayed in the Dialysis Facility Compare website. The date “Modified” in the zipped file indicates the date of the last refresh of the data. For information about facilities in a particular geographical area, you should use the Dialysis Facility Compare website instead of downloading the data.

Generally, the downloadable databases are refreshed within 24 hours after the data are refreshed on medicare.gov. The date “Modified” in the zipped file indicates the date of the last refresh of the downloadable database.



Data Collection Period

The quality measure data in the Dialysis Facility Compare website is refreshed once a year, generally in November. The data collection period for the Anemia under Control and the Dialysis Adequacy measures is for a full calendar year. The Patient Survival data is for a four-year period. See chart below for planned quality measures refreshes.

Month/Year Dialysis Facility Compare Quality Measures are Refresh/Release	Anemia Under Control and the Dialysis Adequacy Measures Collection Dates	Patient Survival
November 2006	Calendar 2005	Calendar 2002 through 2005
November 2007	Calendar 2006	Calendar 2003 through 2006
November 2008	Calendar 2007	Calendar 2004 through 2007

In the Dialysis Facility Compare database, there are four (4) tables.

vwDFC_DLYS_DATA

1. PROVNUM
2. NETWORK
3. FACNAME
4. PHYADDR1
5. PHYADDR2
6. PHYCITY
7. PHYSTATE
8. PHYZIP
9. PHONENUM
10. OWNTYPE
11. CHAINYN
12. CHAINNAM
13. SHIFT
14. TOTSTAS
15. HD
16. PD
17. HOMEHD
18. CERTDATE
19. HGBRD_F
20. HGBL10_F
21. HGBL10_C
22. HGBL10_U
23. HGBL10_S
24. HGBG12_F
25. HGBG12_C
26. HGBG12_U
27. HGBG12_S
28. PURR_F
29. URRG65_F
30. URRG65_C
31. URRG65_U
32. URRG65_S
33. DATEURHT
34. PTSURV_F
35. PTSURV_C
36. PTSURVU1
37. PTSURVU2
38. PTSURVU3
39. PTSURVS1
40. PTSURVS2
41. PTSURV3
42. DATESMR
43. CNTYNAME

vwDFC_SPLIT_STATE

1. StateCode
2. SplitCount

vwDFC_ZIP_CNTY

1. ZIPCode
2. CountyCode
3. StateSplictCount
4. StateSplitName

vwDFC_SPAN_ZIP

1. ZIPCode
2. CountyCode
3. CountyName
4. StateSplitCode

The vwDFC_DLYS_DATA table contains forty-three (43) fields.

1. PROVNUM: text (6)

Lists the numeric code used to identify the provider listed.

2. NETWORK: text (2)

Lists the numeric code for the network in which facility participates. See the Network List at the end of this document.

3. FACNAME: text (77)

Lists the name of the facility listed.

4. PHYADDR1: text (50)

Lists the first line of the address that corresponds to the facility listed.

5. PHYADDR2: text (50)

Lists the second line of the address that corresponds to the facility listed.

6. PHYCITY: text (22)

Lists the name of the city that corresponds to the facility listed.

7. PHYSTATE: text (2)

Lists the alphabetic postal code used to identify the state that corresponds to the facility listed. All fifty (50) states are listed, as well as:

- DC for Washington D.C.
- GU for Guam
- PR for Puerto Rico
- VI for Virgin Islands

8. PHYZIP: text (5)

Lists the full postal ZIP code that corresponds to the facility listed.

9. PHONENUM: text (10)

Lists the telephone number that corresponds to the facility listed.

10. OWNTYPE: text (2)

Indicates if the dialysis facility's operates as a for-profit or non-profit business.

11. CHAINYN: text (1)

Indicates whether or not the facility is owned or managed by a chain organization.

12. CHAINNAM: text (39)

Lists the name of the chain organization if applicable.

13. SHIFT: text (7)

Lists whether or not the facility has a shift starting at 5:00 p.m. or later.

14. TOTSTAS: number (8)

Indicates the total number of dialysis stations at the dialysis facility.

15. HD: text (1)

Indicates whether the facility offers in-center hemodialysis.

16. PD: text (1)

Indicates whether the facility offers in-center peritoneal dialysis.

17. HOMEHD: text (1)

Indicates whether the facility offers home hemodialysis training.

18. CERTDATE: date (9)

Lists the certification date for the facility listed. These facilities are certified if they pass inspection. Medicare or Medicaid only covers care provided by certified providers. Being certified is not the same as being accredited. Medicare or Medicaid only covers care in a certified facility or program.

19. HGBRD_F: number (single)
Lists the number of Dialysis patients at the facility listed with Hgb information.
20. HGBL10_F: number (single)
Percent of Medicare patients who have average hemoglobin value less than 10.0 g/dL in the facility listed
21. HGBL10_C: text (1)
Lists the HGB10 data availability code.
22. HGBL10_U: number (single)
Percent of Medicare patients who have an average hemoglobin value less than 10.0 g/dL in the United States.
23. HGBL10_S: number (single)
Percent of Medicare patients who have an average hemoglobin value less than 10.0 g/dL in the state listed.
24. HGBG12_F: number (single)
Percent of Medicare patients who have average hemoglobin value greater than 12.0 g/dL in the facility listed.
25. HGBG12_C: text (1)
Lists the HGB12 data availability code.
26. HGBG12_U: number (single)
Percent of Medicare patients who have average hemoglobin value greater than 12.0 g/dL in the United States.
27. HGBG12_S: number (single)
Percent of Medicare patients who have an average hemoglobin greater than 12.0 g/dL in the state listed.
28. PURR_F: number (single)
Lists the number of HD patients at the facility listed with URR information.
29. URRG65_F: number (single)
Lists the percentage of hemodialysis patients with a URR information $\geq 65\%$ in the facility listed.
30. URRG65_C: text (1)
Lists the URR data availability code.
31. URRG65_U: number (single)
Lists the percentage of hemodialysis patients with a URR information $\geq 65\%$ in the United States.
32. URRG65_S: number (single)
Lists the percentage of hemodialysis patients with a URR information $\geq 65\%$ in the state listed.
33. DATEURHG: text (4)
Lists the year that URR and HGB are based on.
34. PTSURV_F: text (1)
Lists the survival category in the facility listed.
35. PTSURV_C: text (1)
Lists the patient survival availability code.
36. PTSURVU1: number (single)
Lists the number for survival category 1 the United States.
37. PTSURVU2: number (single)
Lists the number for survival category 2 the United States.
38. PTSURVU3: number (single)
Lists the number for survival category 3 the United States.
39. PTSURVS1: number (single)
Lists the number for survival category 1 the State listed.
40. PTSURVU2: number (single)

Lists the number for survival category 2 the State listed.

41. PTSURVU3: number (single)

Lists the number for survival category 3 the State listed.

42. DATESMR: text (9)

Lists the years the patient survival is based upon.

43. CNTYNAME: text (25)

The vwStateSplctCount table contains two (2) fields.

1. StateCode: text (2)

Lists the two (2) letter code for each individual State.

2. SplitCount: number (long integer)

Counts the number of individual sections in a particular State.

The vwZipCNTY table contains four (4) fields.

1. ZIPCode: text (5)

Lists the postal ZIP code that correspond to the facilities listed.

2. CountyCode: text (5)

Lists the numeric code used to identify each individual county.

3. StateSplitCode: text (3)

Lists the three (3) character code used to identify individual state sections. All fifty (50) states are listed, as well as Washington, D.C., Guam, Puerto Rico and the Virgin Islands. The following States are listed as split states:

The following States use split codes for each section:

- CA1–California–Northern & Central • NY1–New York–Upstate
- CA2–California–Southern • OH2–Ohio–Eastern
- FL1–Florida–Northern • OH1–Ohio–Western & Southern
- FL2–Florida–Southern • TX1–Texas–Eastern & Southern
- NY2–New York–New York City Vicinity • TX2–Texas–Northern & Western

4. StateSplitName: text (50) List the name used to identify individual sections of each state. All fifty (50) states are listed, as well as Washington, D.C., Guam, Puerto Rico and the Virgin Islands. The following States are listed as split states:

- California–Northern&Central • NewYork–Upstate
- California–Southern • Ohio–Eastern
- Florida–Northern • Ohio–Western&Southern
- Florida–Southern • Texas–Eastern&Southern
- NewYork–NewYorkCityVicinity • Texas–Northern&Western

The vwDFC_SPAN_ZIP table contains four (4) fields.

1. ZIPCode: text (5) Lists the postal ZIP codes that correspond to the facilities listed.

Lists the name of the county that corresponds to the facility listed.

2. CountyCode: text (5) Lists the numeric code used to identify each individual county.
3. CountyName: text (30) Lists the name of each individual county.
4. StateSplictCode: text (3) Lists the three (3) character code used to identify individual state sections. All fifty (50) states are listed, as well as Washington, D.C., Guam, Puerto Rico and the VirginIslands. The following States use split codes for each section:
 - CA1–California–Northern & Central • NY1–New York–Upstate
 - CA2–California–Southern • OH2–Ohio–Eastern
 - FL1–Florida–Northern • OH1–Ohio–Western & Southern
 - FL2–Florida–Southern • TX1–Texas–Eastern & Southern
 - NY2–New York–New York City Vicinity • TX2–Texas–Northern & Western

Network List

Number	Name	Geographic Service Area
1	ESRD Network of New England, Inc. 30 Hazel Terrace Woodbridge, CT 06525	Connecticut, Maine, Massachusetts, New Hampshire, Rhode Island, Vermont
2	CKD Network for New York 1979 Marcus Avenue, Suite 105 Lake Success, NY 11042-1002	New York
3	Trans Atlantic Renal Council Cranbury Gates Office Park 109 S. Main Street-Suite 21 Cranbury, NJ 08512-3142	New Jersey, Puerto Rico, Virgin Islands
4	ESRD Network 4, Inc. 40 24th Street Suite 410 Pittsburgh, PA 15222	Delaware, Pennsylvania
5	Mid-Atlantic Renal Coalition 1527 Huguenot Road Midlothian, VA 23113	Virginia, West Virginia, Maryland, District of Columbia
6	Southeastern Kidney Council, Inc. 1000 St. Albans Drive, Suite 270 Raleigh, NC 27609	Georgia, North Carolina, South Carolina
7	ESRD Network of Florida, Inc. 5801 W. Kennedy Boulevard, Suite 900 Tampa, FL 33609	Florida
8	Network 8, Inc. PO Box 55868 Jackson, MS 39296-5868	Alabama, Mississippi, Tennessee
9/10	The Renal Network, Inc. 911 East 86th Street Suite 202 Indianapolis, IN 46240	Illinois, Indiana, Kentucky, Ohio
11	Renal Network of the Upper Midwest, Inc. 1360 Energy Park Drive, Suite 200 St. Paul, MN 55108	Minnesota, Michigan, North Dakota, South Dakota, Wisconsin
12	ESRD Network #12 7505 NW Tiffany Springs Pkwy Suite 230 Kansas City, MO 64153	Iowa, Kansas, Missouri, Nebraska
13	ESRD Network Organization #13 4200 Perimeter Center Drive, Suite 102 Oklahoma City, OK, 73112-2314	Arkansas, Louisiana, Oklahoma
14	ESRD Network of Texas, Inc. As of 1/30/2007: 4040 McEwen, Suite 350, Dallas, TX 75244-5015	Texas
15	Intermountain ESRD Network, Inc. Penn Center, 1301 Pennsylvania Street # 750 Denver, CO 80203-5012	Arizona, Colorado, Nevada, New Mexico, Utah, Wyoming
16	Northwest Renal Network 4702 42nd Avenue, SW Seattle, WA 98116	Alaska, Idaho, Montana, Oregon, Washington
17	Western Pacific Renal Network, LLC 505 San Marin Drive, Building A, Suite 300 Novato, CA 94945	American Samoa, Guam, Mariana Islands, Hawaii, Northern California
18	Southern California Renal Disease Council, Inc. 6255 Sunset Boulevard Suite 2211 Los Angeles, CA 90028	Southern California